



How to install AMI Databases



AMI Software Installation Assistant

AMI Database of Pipe Extruders in Europe - Gold

Install AMI database ▶

Install

Overview of the market ▶

Open

More about AMI ▶

Open

Website

Exit

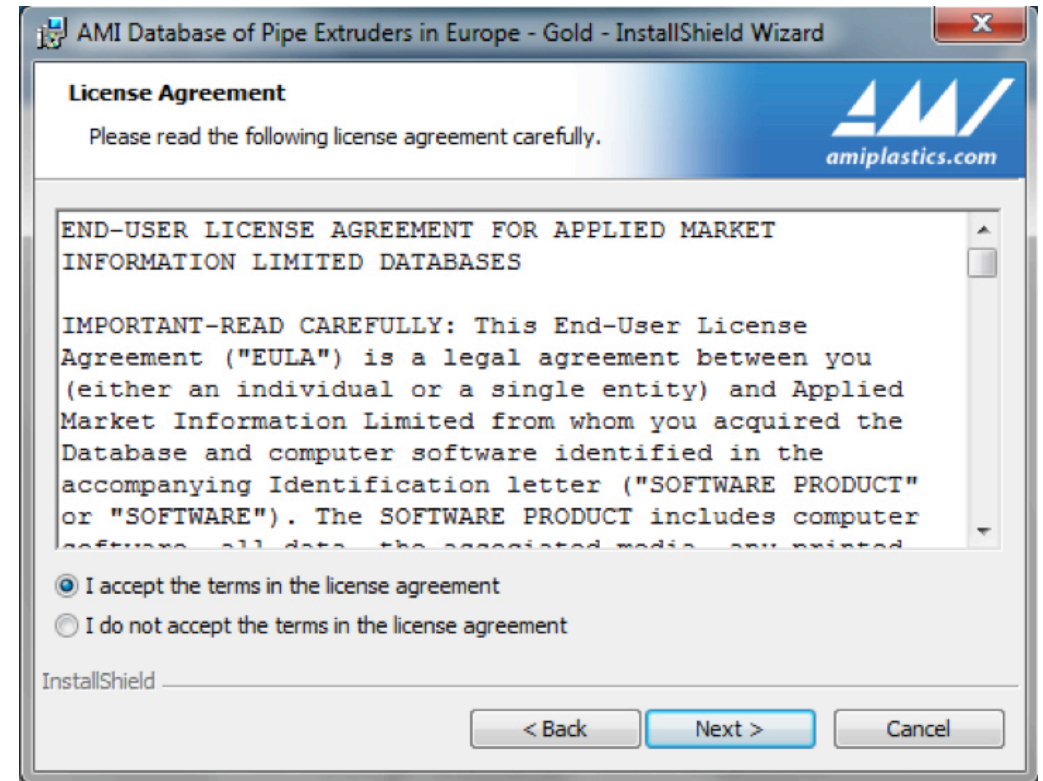
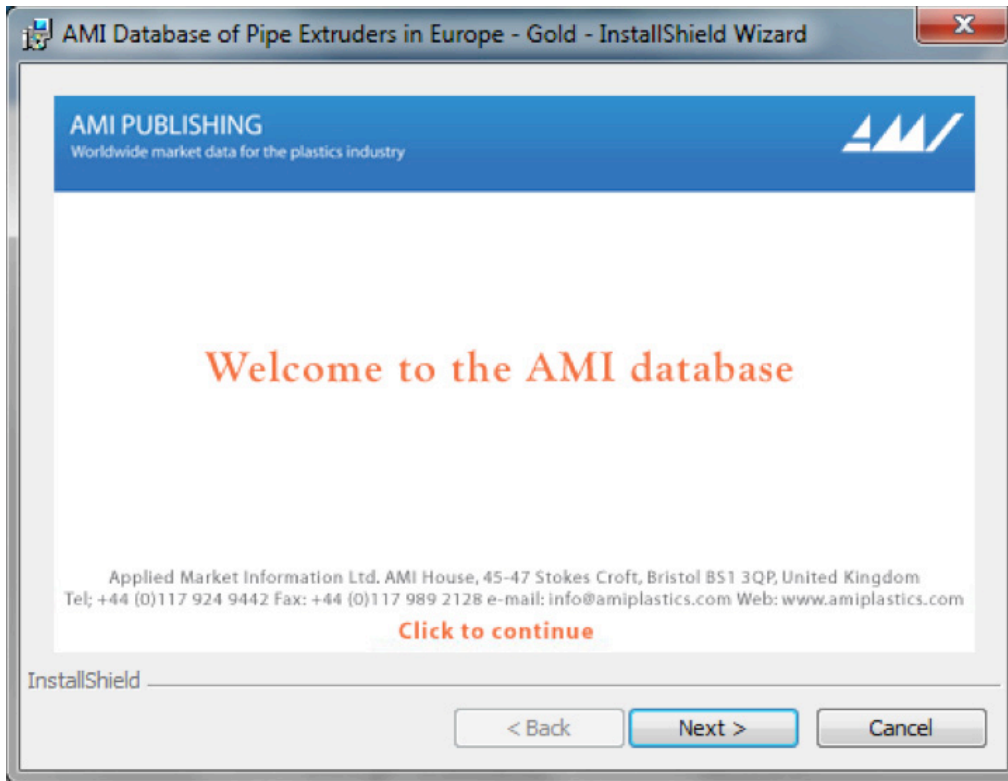
amiplastics.com

Once installed please find shortcut by clicking the start button and selecting All Programs

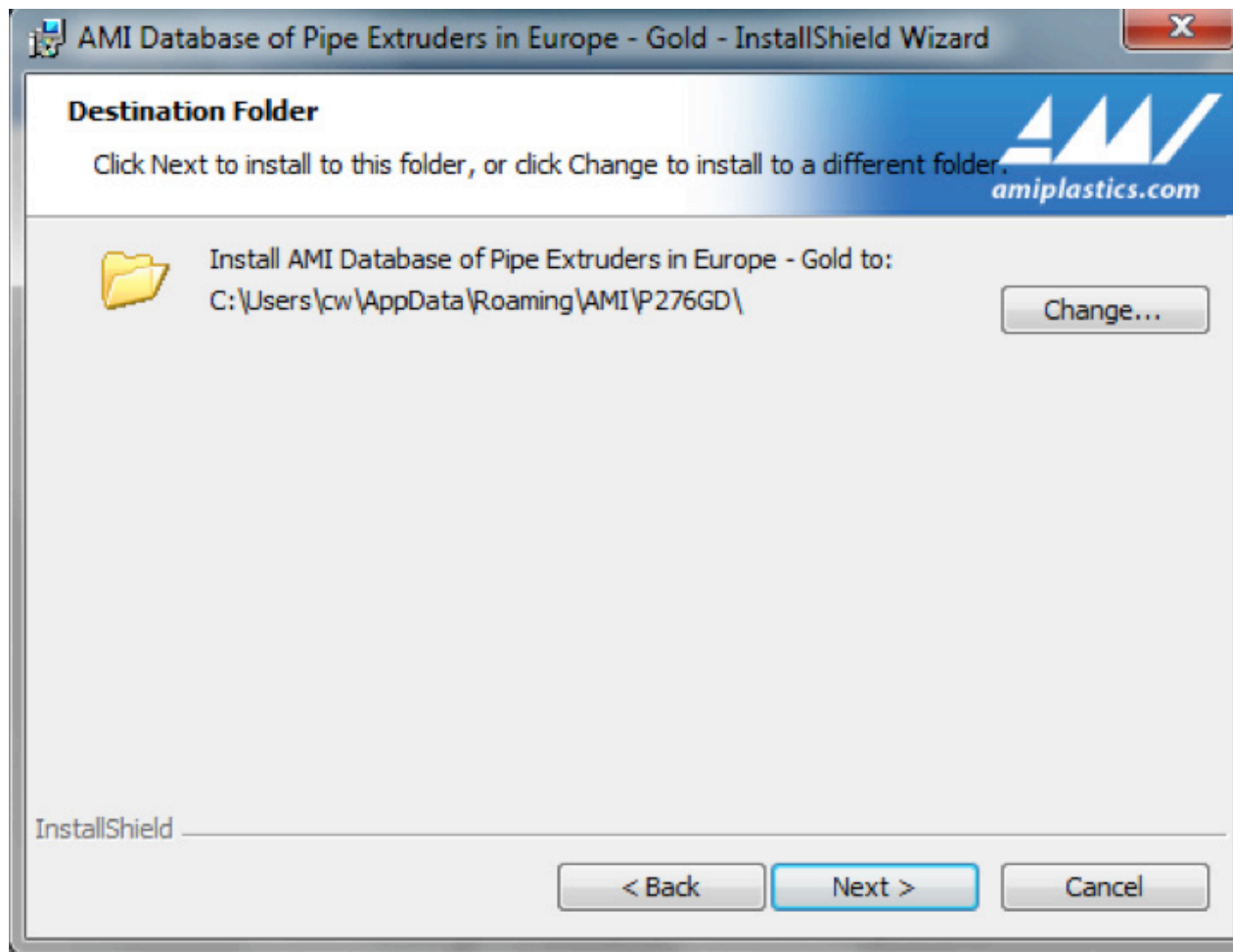
Click on install to start the installation of the database and follow the instructions.

An overview of the market is also available for you to download as a pdf.

To find out more on AMI and see a full list of our publications

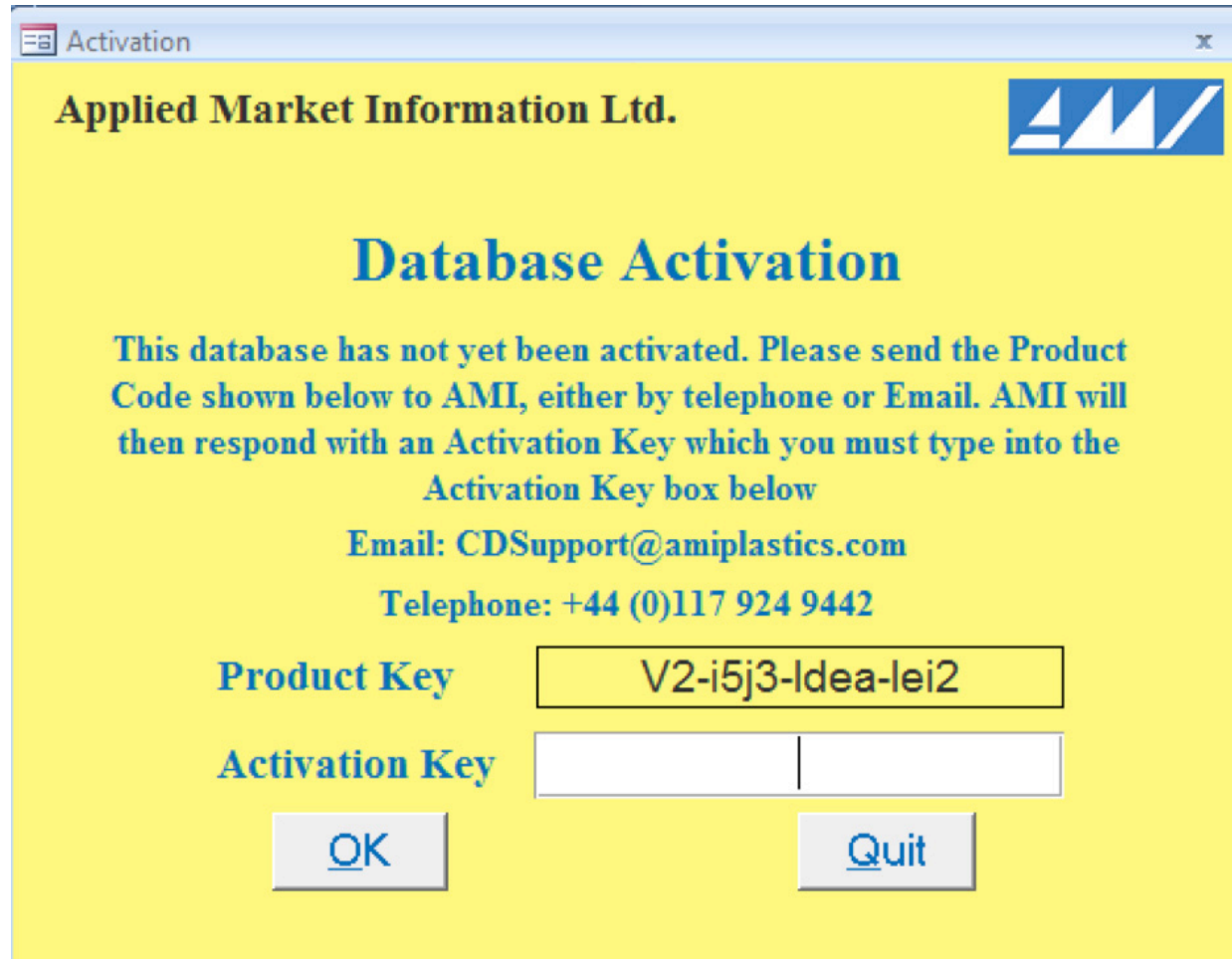


Click on "Next" and accept the terms of the licence agreement, continue to click on next until you see a message telling you that the database has been successfully installed.



Click on "Next" and the database will be installed in a default directory.

Trouble shooting: : After completing the installation, if there are any errors on opening the database please reinstall and specify a different location here. Please check with your I.T. department which is the best location to install the database.



After you have installed the database, click on your Start button, select Programs and choose the AMI database amongst your list of programs. The database will open and you will see a yellow screen, similar to this one, with a product key, please email this product key to CDSupport@amiplastics.com and we will be able to generate an activation key for you.

You will only need this product key the first time you open the database.
For any other queries, contact CDSupport@amiplastics.com.